



**Best Agrolife Limited**

(An ISO 9001 : 2015 Certified Company)

▶  
◀ **Disease Management With Crop Vigour Booster**



**Dose:**  
**500 g**  
**Per Acre**

**Presentation :**  
1 Kg, 500 g & 250 g



# SULU (Tebuconazole 10% + Sulphur 65% WG)



## Mode of Action ▶

Sulu is a very effective fungicide with Protective, Curative and Eradicative action. It controls Powdery mildew & Fruit rot diseases of Chilli and Leaf spot, Pod blight disease of Soybean.

Sulphur helps in formation of chlorophyll that permits photosynthesis, thus it is essential for growth & development of all crops.

## Recommendation ▶

Crop (S)	Common Name of Diseases	Dosage / HA		Dilution in water (Litre)
		a.i. (g)	Formulation (g)	
Chilli	Powdery mildew & Fruit rot	937.50 (125+812.5)	1250	500
Soybean	Leaf spot and Pod blight	937.50 (125+812.5)	1250	500



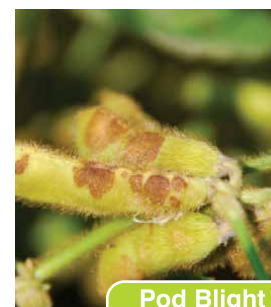
Fruit Rot



Powdery Mildew



Leaf Spot



Pod Blight

## Time of Application ▶

Sulu is applied with knapsack sprayer at early appearance of disease.