



Best Agrolife Limited
(An ISO 9001 : 2015 Certified Company)

CITIGEN

New, Advanced,
Low-Dose Formulation,
The World's Leading
Insect Control
Technology



Dose:
60-150 ml
Per Acre

Presentation :
300 ml, 150 ml, 60 ml, 30 ml & 10 ml



CITIGEN (Chlorantraniliprole 18.5% w/w SC)

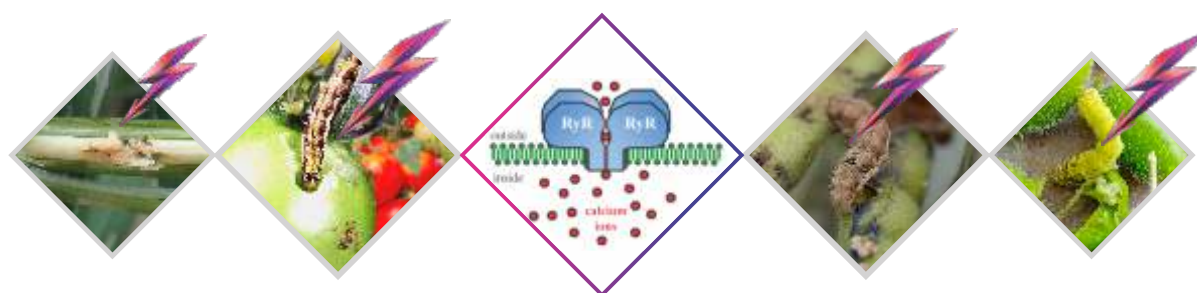


Mode of Action ►

Citigen (Chlorantraniliprole (CAP) is a plant systemic insecticide that belongs to the group anthranilic diamide, which has a unique mode of action called Ryanodine Receptor Activators that disrupt normal muscle functions within the pest.

Activation leads to the unregulated release of Ca²⁺ (Calcium) from the sarcoplasmic reticulum muscle cells resulting in impaired muscle paralysis, feeding cessation, lethargy and eventually insect death.

- **High larvicidal potency works through Ingestion**
- **Excellent ovi-larvicidal activity**
- **Rapid damage control because of quick feeding cessation**



Recommendation ►

Crop (S)	Common Name of Pest (S)	Dosage / HA		Dilution in water (Litre)
		a.i. (g)	Formulation (ml)	
Pigeon Pea	Gram pod borer, Pod fly	30	150	500-750
Black Gram	Pod Borer	20	100	500
Cotton	American Boll Worm, Spotted bollworm and Tabacco caterpillar	30	150	500
Bittergourd	Fruit Borers & Caterpillars	20-25	100-125	500
Sugarcane	Termite	100-125	500-625	1000
	Early Shoot Borer and Top borer	75	375	1000
Bengal gram	Pod Borer	25	125	500
Tomato	Fruit borer	30	150	500
Rice	Stem borer and Leaf Folder	30	150	500
Cabbage	Diamondback Moth	10	50	500
Brinjal	Fruit and Shoot Borer	40	200	500-750
Okra	Fruit borer	25	125	500
Maize	Spotted Stem Borer, Pink Stem Borer	40	200	500
Chilli	Fruit borer	30	150	500
Groundnut	Tobacco caterpillar	30	150	500
Soybean	Green semiloopers, Stem Fly Girdle Beetle	30	150	500-750

Time of Application ►

For Sugarcane: Drenching/Soil Drenching in Sugarcane crop for control of termites, early shoot borer and Top borer at the time of planting.

For Other Crops: Spray at ETL of the pest population preferably during vegetative / at the onset of flowering stage.